

SYM-TECH PRODUCTS ANALYTICAL DATA CARD

ITEM

NAME:	ARCHITECTURAL ELEMENTS SYSTEM	CATEGORY:	PRECAST CONCRETE
BRAND:	SYM-TECH		-ARCHITECTURAL
COUNTRY OF ORIGIN:	CANADA		-STRUCTURAL
			-HERITAGE

TECHNICAL CHARACTERISTICS

DESCRIPTION: HYDRAULIC CEMENT ELEMENTS USED AS AN OUTER VENEER FOR RESIDENTIAL, COMMERCIAL OR INDUSTRIAL BUILDINGS. THESE STONES ARE INTEGRATED INTO THE VARIOUS TYPES OF MASONRY TO ENHANCE THEIR PRESTIGE

COMPOSITION: - PORTLAND CEMENT - AGGREGATES
- ADDITIVES

UPON COSTUMER REQUEST

- ISOROD REINFORCEMENT AND OTHERS
- COLOUR PIGMENTS

CONCRETE'S CHARACTERISTICS: - RÉSISTANCE 40 MPA
-AIR 5 @ 8%
-SPREADING 500MM WITH AUTO-PLACING

MAINTENANCE: NO MAINTENANCE REQUIRED

HOWEVER,SHOULD CONTACT WITH DEICING SALT BE POSSIBLE, WE RECOMMEND A SEALER APPLICATION

DIMENSIONS: VARY WITH THE ITEMS

INSTALLATION: ACCORDING TO THE NATIONAL BUILDING CODE

SYM-TECH PRODUCTS ANALYTICAL DATA CARD

COLORS AND FINISH

3 STANDARD COLORS



M-197



M-113



M-334

OTHER COLORS AVAILABLE

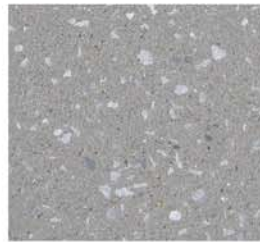
REFER TO RECENT COLOR SAMPLES TO CHOOSE THE COLOR.

DUE TO THE NATURAL COMPOSITION OF THE CONCRETE, THE PRODUCTS CAN HAVE A COLOR VARIATION OF 5% TO 10%. SYM-TECH IS NOT RESPONSIBLE FOR THE COLOR VARIATION OF THE PRODUCT. EFFLORESCENCE CAN APPEAR ON THE SURFACE OF THE PRODUCTS IS A NATURAL PROCESS THAT GRADUALLY DISPERSES OVER TIME. WE USE A ½ CUBIC METER MIXER TO OBTAIN BETTER PRECISION IN THE COLORING OF OUR MIXTURE.

FINISH



LIGHT
(STANDARD)



MEDIUM



DEEP

SYM-TECH PRODUCTS ANALYTICAL DATA CARD

GUARANTEE:

GUARANTEE LIMITED TO 1 YEAR FOR MATERIAL DEFECTS AND LABOUR

PRODUCT LIFE IS 75 YEARS (EXCEPT EXCEPTION)

APPLICABLE NORMS AND STANDARDS

COMPLIES WITH STANDARDS:

CAN/CSA - A5-98	CSA G30.14 - M83
CAN/CSA - A8-98	CSA G30.5
CAN/CSA A23.1/-F09.	CAN/CSA-G40.20
CAN/CSA A23.2-F09.	CAN/CSA-G40.21
CAN/CSA A23.3-F09	A251-00
CAN/CSA A23.3-F04.	A266.1
CAN/CSA A23.4-F09.	A266.2
CAN/CSA - A362-98	

FOR MORE INFORMATION ON THE NORMS AND STANDARDS, SEE THE SYM-TECH MATRIX

STORAGE

SYM-TECH CONCRETE ELEMENTS ARE PACKAGED WITH A PROTECTIVE FILM DESIGNED FOR SHORT-TERM STORAGE. AFTER 60 DAYS OF STORAGE, SYM-TECH IS NO LONGER RESPONSIBLE FOR PACKAGING AND ANY DAMAGE THAT MAY OCCUR TO THE EQUIPMENT. PARTS MUST BE STORED ON SITE IN A MANNER DESIGNED TO PREVENT DAMAGE OR STAINING. THE PARTS MUST BE STACKED ON SITE ON PLANKS OR PALLETS AT LEAST 3 "ABOVE THE GROUND. PLACE A POLYTHENE OR OTHER PLASTIC FILM BETWEEN THE WOOD AND THE ELEMENTS WHEN THEY NEED TO BE STORED FOR A LONG PERIOD OF TIME.

STORED ITEMS SHOULD BE COVERED IF EXPOSED TO WEATHER CONDITIONS. DO NOT USE DE-ICING COMPOUNDS TO REMOVE ICE ON CONCRETE SURFACES.